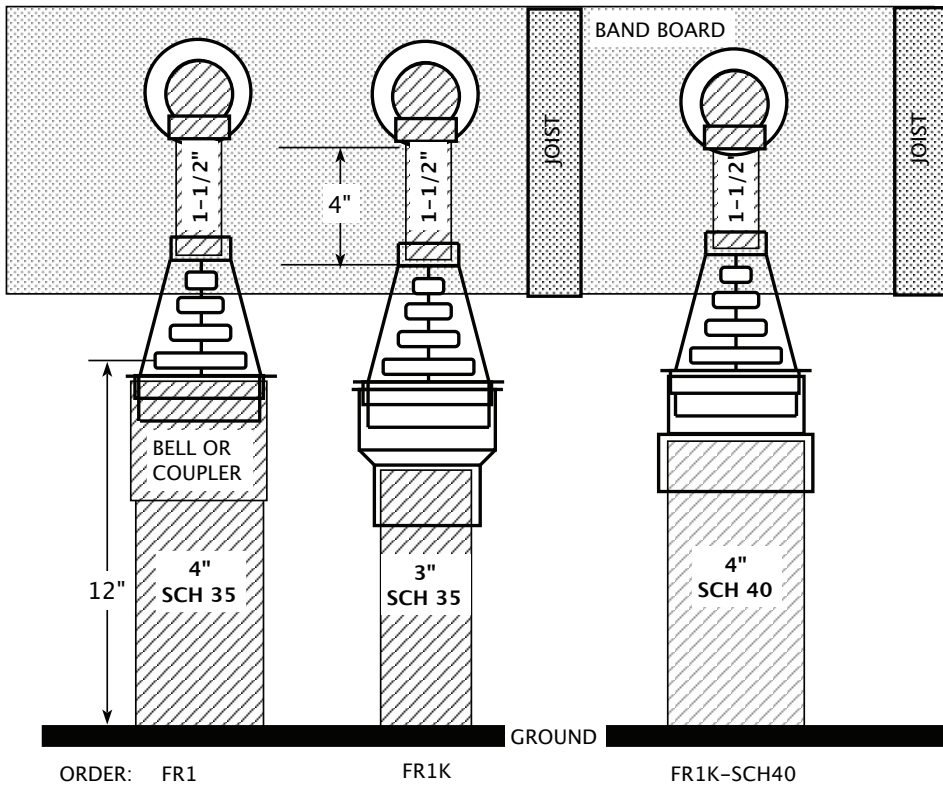




RECOMMENDED FREEZE RELIEF SET UP OPTIONS
(Pipe size listed on each pipe)



FREEZE RELIEF IS BEEN DESIGNED TO GIVE YOUR SUMP PUMP SYSTEM A SPILLWAY FOR WATER TO ESCAPE IN CASE THE BURIED DISCHARGE BECOMES BLOCKED. IN COLDER CLIMATES, THE GREATER THE CLEARANCE BETWEEN THE RELIEF VENTS AND THE GROUND THE BETTER.

WE RECOMEND:

1. INSTALLING THE TOP OF THE FREEZE RELIEF ABOUT 4" BELOW ELBOW.
2. INSTALLING THE FREEZE RELIEF WITH 12" OR MORE OF CLEARANCE BETWEEN THE LOWEST RELIEF VENT AND THE GROUND.

